

NG35 / NG40 / NG45

Gas Burner

388kW - 1137kW



NG35/40/45 Gas Burner features:

- Energy saving and compatible with environmental requirements
- Quiet in operation
- Reliable and trouble-free
- Designed and approved in accordance with the European Standard EN 676
- Industry standard components easily available
- 2-stage or fully modulating operation (modulation optional extra)
- Prewired control panel and simple plug-in gas train facilitates the installation
- Fully closing air damper (optional on NG35 on/off)
- Fuel: Natural Gas or LPG (Town's Gas and Biogas on request)
- Optional extras
 - Air inlet silencer
 - Separate water level control (AOTC) panel
- All kW ratings are nett CV



For more information on all Nu-way products
please visit www.nu-way.co.uk

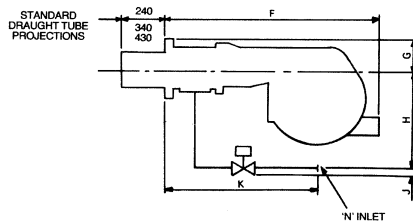
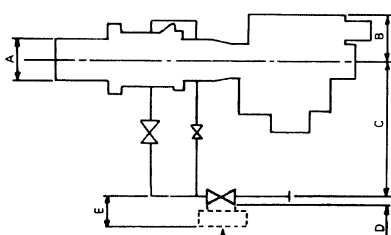
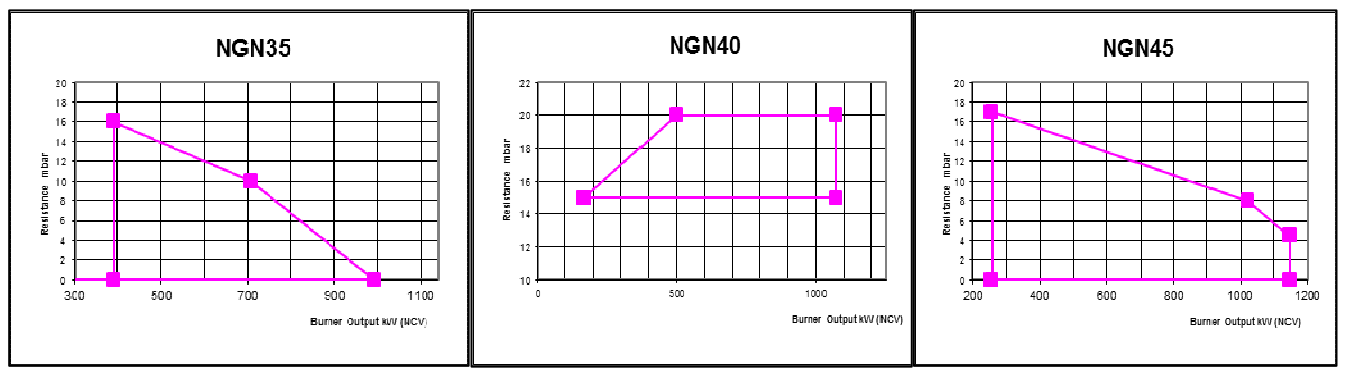


Enertech Group

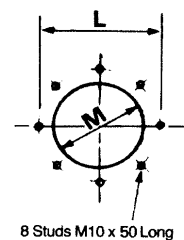
Burner Type		NG35	NG40	NG45
Capacity	kW	388-983	496-1060	253-1137
Motor	V/ph/Hz	380-420/3/50	380-420/3/50	380-420/3/50
	kW	1.1	3.0	2.2
Start Current	A/each phase	15	35	25
Run Current	A/each phase	2.5	6.1	4.6
Cable size	mm ²	1.0	1.5	1.5
Fuse	HRC (A)	10	20	15
Control unit		LFL1	LFL1	LFL1
Operation Options		2 Stage / Mod	2 Stage / Mod	2 Stage / Mod
Flame monitoring		UV Cell	UV Cell	UV Cell
Air damper		Electric Actuator FCAD	Electric Actuator FCAD	Electric Actuator FCAD
Max inlet gas pressure	mbar	300	300	300
Noise @ 1m	dBA	87	87	87
Gross weight	kg	75	101	101
Volume	m ³	0.77	0.77	0.77

Other electrical supply options available on request.

Performance Fields



Boiler Frontplate drilling



Burner	A	B	C	D	E	F	G	H	J	K	L PCD	M	N BSP
NG35	182	220	430	70	270	885	141	300	110	745	254	200	2"
NG40	224	260	430	70	270	1183	166	300	110	745	305	234	2"
NG45	224	260	430	70	270	1183	166	300	110	745	305	234	2"

Enertech Limited, P O Box 1, Vines Lane
Droitwich, Worcestershire, WR9 8NA

tel: +44 (0) 1905 794331 • fax: +44 (0) 1905 794017
email: info@nu-way.co.uk • web: www.nu-way.co.uk

